

**CONTENTS**

Brother Fax Machines	212
Brother P-Touch Label Machines	213
Sharp Cash Register	216
Sharp Calculators	216
Datex Calculators	219
Aurora Calculators	219
Fellowes Shredders / Accessories	223
Fellowes Lamination	231
Fellowes Binders / Accessories	237
Dixon Binding Covers	241
Fellowes Office Guillotines	243
Fellowes Electric Office Trimmers	243
Fellowes Cleaning Solutions	246



## BROTHER FAX MACHINES

### BROTHER FAX878 FAX MACHINE

Plain paper fax & copier for home & small office use. More than just a facsimile, the FAX-878 can make copies of your faxes or other documents and comes with an integrated handset that can be used for making calls. Brothers Fax Easy series delivers an easy-to-use, attractive and space-saving solution to meet all your facsimile needs.

- Integrated handset doubling up as a telephone
- Copy reduce or enlarge document sizes from 50% to 150%
- 12 one-touch keys and up to 112 speed-dial and broadcasting locations for added convenience
- 9.6 Kbps modem speed, approx. 15 sec transmission

**444878 FAX878**



### BROTHER FAX837MCS FAX MACHINE

Plain paper fax & copier digital answer machine for home use. This tireless, space-saving office companion can digitally record up to 60 seconds of incoming voice messages. With superior silver finish, this easy-to-use plain paper fax machine even offers caller ID and caller "hold" facilities. With fast transmission speeds of 9 seconds you can now store up to 4 group dials, making the sending of bulk messages easier.

- Plain paper thermal fax
- 14.4Kbps modem speed (9 seconds transmission)
- 512KB memory capacity
- 30 sheets paper capacity
- 10 sheet auto document feeder
- 4 one touch 100 speed dials

**BR4032 FAX837MCS**



### BROTHER FAX1030E FAX MACHINE

Plain paper fax & copier digital answer machine for home & small business. At the heart of this combined telephone / answer / fax machine is a professional plain paper fax facility with advanced business functions. It is ideal for the home or office that requires both facilities but has restricted space. So why have two separate machines when you can have it in one? With the aid of Brother's navigation key, it is both quick and easy to search through and select any of the FAX-1030e's many advanced business functions. The machine also boasts the ability to automatically redial the intended recipient, should the number be busy.

- Plain Paper Fax
- In-built Telephone Handset
- In-built Digital Answer Machine
- 14.4kbps G3 Modem
- 1MB Memory
- 200 sheet paper tray
- Caller ID and FaxAbility compatible

**FAX1030E FAX1030E**



### BROTHER FAX2820 FAX MACHINE

Plain paper laser fax & copier for business use. The Fax2820 is more than just a fax machine. It triples up as a laser copier and phone as well. As a copier, the machine produces a resolution of up to 200 x 300dpi, with reduce / enlarge ratios from 50%-200%, in 1% increments. Of course, with the integrated handset, it gives you so much more communication convenience. But that's not all: the FAX2820 can be converted into your very own laser printer.

- 8MB standard memory
- 14.4Kbps modem speed
- 250 sheet paper tray
- 20 page auto document feeder
- 20 one touch and 200 speed dials
- Broadcasting up to 270 locations

**BR4037 FAX2820**



## BROTHER P-TOUCH LABEL MACHINES

### BROTHER PT90 P-TOUCH LABEL MACHINE

The PT-90 features a brand-new Deco Mode with 8 new designs for creating designer-like labels to identify and organise your home or office. With a large 12-character LCD display, and QWERTY-style keyboard for enhanced table-top usability and familiarity, the PT-90 prints in 6 font sizes, 9 font styles and 7 framing options. It can also print one or two lines, on two different label widths (6/12mm).

444430 PT90



### BROTHER PT1090 P-TOUCH LABEL MACHINE

An easy-to-use, hand-held labelling machine for the office or home, that produces a wide variety of professional quality labels made to last.

- Built-in manual tape cutter
- ABCD style keyboard
- LCD:12 character x 1 line & indicators
- 10mm / sec print speed

444429 PT1090



### BROTHER PT1290 P-TOUCH LABEL MACHINE

The PT1290 features an easy-view 15-character LCD display and typewriter-style keyboard. A dedicated "Deco Mode" key gives you easy access to 15 unique, pre-designed label formats for creating decorative labels including professional layouts that accommodate 2 rows of text. Prints labels up to 12mm wide on durable, TZ laminated tape - perfect for both indoor and outdoor use. Other great features include: 15-character LCD display, 6 Auto Formats and 7 Framing Options. Built-in memory saves up to 9 of your favourite labels. Uses 6 "AAA" batteries or optional AC adapter (neither included).

444445 PT1290



### BROTHER PT2030 P-TOUCH LABEL MACHINE

Ideal for home and business use, the PT2030 has a simple-to-use keyboard for easy operation. This labelling machine benefits from having a large LCD display for easy viewing and editing. Choose from 3.5, 6, 9, 12 and 18mm TZ laminated tape range.

- Uses laminated TZ tapes
- Larger LCD screen
- Raised angled keys for more accurate input
- Has text framing and underlining

444495 PT2030

(For tapes go to page 196)



## BROTHER PT2730 P-TOUCH LABEL MACHINE

The PT-2730 is a PC compatible desktop labelling machine which is ideal for all office labelling requirements. Its features include printing labels which incorporate text, logos, images, barcodes and pricing information and is the necessary professional labelling choice.

- Easy to use QWERTY-style design
- Durable – labels up to 24mm, able to handle extreme conditions
- Preview your design easily with the large LCD screen
- Built in Automatic cutter
- Get creative, with customised labels printed direct from your PC
- Extra versatility – print labels to 3.5, 6, 9, 12, 18 & 24mm

**444496** PT2730



## BROTHER PT2430PC P-TOUCH LABEL MACHINE

Turn anything you create on your computer into a P-touch label! Combine text, symbols, bar codes, photos and graphics to create custom labels. Includes easy-to-use templates for address labels, video labels, CD labels, and more. Plug it in, turn it on, and print. Creating personalised self-adhesive labels is easy with the Brother P-touch. This easily connected integrated system consists of a high resolution label printer and software, guaranteeing you maximum flexibility and creativity.

**BR4005** PT2430PC

(For labels go to page 196)



## BROTHER PT7600 P-TOUCH LABEL MACHINE

Durable and rugged handheld labeller uses new flexible ID tape and rotated print for cable wrapping and flagging, industrial strength laminated tapes for patch panel labelling and standard laminated tapes for faceplate labelling. Download databases, custom templates and graphics. Memory functions to store frequently used label designs, easy-entry keyboard and large display for quick editing. Auto sizing, sequential numbering, repeat printing, and vertical style for quick labelling. Auto power-off feature helps to save battery life. Includes Flexible ID adhesive tape, rechargeable battery, AC adapter and carry case.

- Portable rugged design
- Download custom templates (with a database), and graphics to internal, non-volatile memory
- Built-in Telecom / datacom templates - wire / cables, patch panels, faceplates
- Makes rotated, vertical and horizontal labels
- Prints industry-standard bar codes

**BR7600** PT7600



## BROTHER QL500W P-TOUCH LABEL MACHINE

Introducing the QL500W Label Printer, the faster, easier and cheaper way to print labels. By connecting straight to your PC/Mac, the QL500W with built-in manual cutter can print photos, logos and barcodes in one simple step by using the software provided. You can now create instant mailing labels, CD labels, file folder labels as well as durable continuous length labels to make banners and signs for whatever task, however big or small. There is no wastage of labels as you would have with partially printed label sheets, because you only print as many as you need. You can now print labels direct from Word, Excel and Outlook with the smart add-in utility feature. Printing labels is as easy as 'Highlight, Click and Print'. Or you can get creative and design your own labels by using the label design software provided.

- Standard Address labels (DK11201) (starter roll 100 labels)
- USB cable
- CD-ROM (P-touch Editor 5.0 software, driver, user guide)
- AC Power cord
- Up to 50 labels per minute print speed
- Up to 300 x 300dpi print resolution
- Built-in manual cutter
- Prints on labels up to 60mm width
- User-friendly software

**BR500W** QL500W



## BROTHER QL570 P-TOUCH LABEL MACHINE

Print either continuous or die-cut labels using the stylish new QL570 Paper Label Maker at up to 68 standard address labels per minute, and it comes with convenient auto-paper cutting - no more tearing off labels. Supplied standard with easy-to-use Brother P-touch Editor 5.0 software which will enable you to create your own customised labels, insert text, graphics, barcodes and images.

- Up to 68 labels per minute
- Create customised labels with P-touch Editor 5.0 software
- Auto paper cutting - no tearing

**BR570** QL570



## BROTHER QL580N P-TOUCH LABEL MACHINE

The QL580N Professional Label Printer is designed to fit neatly onto your desk without occupying much space, and connects easily via USB or network to your PC or Mac. Its high print resolution makes it perfect for printing quality logos, images, and text onto your labels. Free sophisticated label design software. Free 100 x DK standard address labels. Free 8m DK continuous label roll (62mm wide). The QL580N is network-ready, allowing everyone in the office to print labels from the same printer.

- Built-in auto cutter
- Up to 300x600dpi super fine mode printing
- Print on labels up to 62mm wide
- Print up to 68 labels per minute

**444434** QL580N

(For labels go to page 196)



## BROTHER QL650TD P-TOUCH LABEL MACHINE

Whether you need one label or lots of labels the QL650TD is perfect for printing address and shipping labels, name badges and even banners and signage by printing on continuous tape. When the QL650TD is disconnected from the computer, users can print from the 8 pre-set label designs or 10 custom label designs. Print 'Date of Production' labels, 'Best Before' labels and 'Inspection' labels for medical, laboratory, retail, food, warehousing, manufacturing and production use. By connecting straight to your PC/Mac, the QL650TD with built-in automatic cutter can print photos, logos and barcodes in one simple step by using the software provided. You can now print labels direct from Word, Excel and Outlook with the smart Add-in Utility feature. Printing labels is as easy as 'Highlight, Click and Print'. Or you can get creative and design your own labels by using the label design software provided.

- Windows and Mac compatible
- 300dpi, max print height 59mm
- In-built time and date printing at the touch of a button
- Fastest print speed in its class of 56 labels/min<sup>^</sup>
- Front panel LCD display showing time, date and message

**BR4038** QL650TD



## BROTHER QL570 WITH VISITOR MANAGEMENT SOFTWARE

The VM100KIT visitor badge and management software is the total solution for registering visitors and contractors to your company, issuing high-quality printed visitor badges and the recording of visitor data for later analysis and reporting. With the VM100KIT you receive: The Brother QL570 label printer, VM100 Visitor Badge and Management Software, 1 x DKN55224 paper rolls (to print almost 700 badges), 12 x clip-on plastic badge holders and a handy roll storage box. It is your company's complete visitor registration system in one easy-to-set-up kit. The software is easy to install and configure, and you can be up and running within minutes. VM100 can be left running in the background of the receptionists PC, available for use as soon as any visitor arrives.

- Quickly sign-in visitors and print a badge in seconds with the Brother QL570 Label printer included in the pack
- See at a glance which visitors are signed in
- Design your visitor badge and include a logo if required
- One-click emergency report printing
- Password protection of visitor data

**444433** VM100KIT



## SHARP CASH REGISTER

### SHARP XEA102 CASH REGISTER

- Flash X reporting
- Battery memory protection
- Bill / coin compartment configuration (3 note / 6 coin)
- Small footprint
- Secret code control of Z reset and programming jobs
- 8 departments (5 - 8 by shift key)
- 80 PLUS for programming automatic price entry
- Drawer with media slot
- Key activated mode switch
- Rounding of cash sales to nearest 5 cents
- 4 tax rates
- 1 foreign exchange key
- Void sale mode
- Error escape function
- Dimensions 330 x 363 x 253 mm (w x d x h)

**XEA102** Sharp Calculator



## SHARP PRINT DISPLAY CALCULATORS

### SHARP EL1611P CALCULATOR

- 12 digit LCD screen with punctuation
- Efficient 1.4 lines / second printing speed
- Battery or electric operation via optional AC adapter
- Large screen display
- Internal or external paper roll supply
- Tax function
- Dimensions 96 x 191 x 40mm (w x d x h)

**EL1611P** Sharp Calculator



### SHARP EL1801C CALCULATOR

- 12 digit LCD screen with punctuation
- Efficient 2.1 lines / second printing speed
- Battery or electrical operation via optional AC adaptor
- Large screen display
- Convenient tax keys
- 2 colour printout
- Dimensions 170 x 231 x 57.5mm (w x d x h)

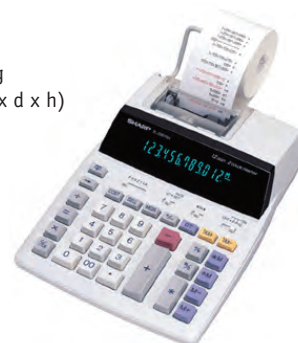
**EL1801C** Sharp Calculator



### SHARP EL2901RH CALCULATOR

- 12 digit blue fluorescent display
- 2 Colour printout, 2.1 lines / second print speed
- Cost / sell / margin calculation
- Grand total and item count functions
- Rounding selection
- Tax keys
- Power source AC only
- Professional keyboard for easy typing
- Dimensions 193 x 256 x 62.5mm (w x d x h)

**EL2901RH** Sharp Calculator



### SHARP EL2630PII CALCULATOR

- Large 12 digit display with punctuation
- High speed printing 4.8 lines / second
- AC Power source
- 2 Colour print using twin spool ink ribbon
- GT function which automatically accumulates totals
- 2 key TAX function
- Average and currency conversion keys
- Constant, rounding and item count functions
- Double zero and mark-up keys
- Extra heavy duty office calculator
- Dimensions 228 x 336 x 78mm (w x d x h)

**EL2630PII** Sharp Calculator



## SHARP DESKTOP CALCULATOR

### SHARP EL124A CALCULATOR

- Large 12 digit display
- Dual power with auto power off
- 3 digit punctuation
- Tilttable display
- Constant function
- 2 key roll-over
- Tax +/-
- Square root function
- Dimensions 102 x 148 x 15mm (w x d x h)

**EL124A** Sharp Calculator



### SHARP EL145A CALCULATOR

- Large 14 digit display
- Dual power with auto power off
- 00 key
- 3 digit punctuation
- Tilttable easy to read LCD display
- Constant function
- 2 key roll-over
- Tax +/-
- Square root function
- Sign change
- Dimensions 110 x 168 x 15mm (w x d x h)

**EL145A** Sharp Calculator



## SHARP BUSINESS CALCULATOR

### SHARP ELM711G CALCULATOR

- Large 10 digit display
- Dual power with auto power off
- 3 digit punctuation
- Slanted display
- Constant function
- Tax +/-
- Easy to use
- 00 key
- Sign change and percentage
- 2 key roll-over
- Dimensions 100 x 151.5 x 33 mm (w x d x h)

**ELM711G** Sharp Calculator



### SHARP EL2128V CALCULATOR

- Large 12 digit LCD screen with punctuation and function symbols
- Tilt display allows screen to be adjusted to best viewing angle
- Kick stand which makes key-in more comfortable
- GT function which automatically accumulates totals
- Resume Plus, which resumes calculation in progress after auto power off, plus line counter and condition symbol
- Answer check function
- Tax +/-
- Day/date function
- Dimensions 140 x 197 x 26.5mm (w x d x h)

**EL2128V** Sharp Calculator



## SHARP POCKET CALCULATORS

### SHARP EL233SB CALCULATOR

- Large 8 digit display
- Battery powered
- Basic calculator functions plus memory, square root and percent
- Constant function
- Dimensions 60 x 103 x 8.3mm (w x d x h)

**EL233SB** Sharp Calculator



### SHARP EL123S CALCULATOR

- Large 12 digit display
- Dual power with auto power off
- Hard case for extra durability
- Calculator functions plus memory, square root and percent
- Tax +/-
- Dimensions 72 x 115 x 12mm (w x d x h)

**EL123S** Sharp Calculator



### SHARP EL240SAB CALCULATOR

- 8 digit LCD screen with punctuation
- Twin power (solar cell & battery LR1130 X 1)
- Large screen display
- Slant display for easy viewing
- Large keys
- Decimal point select
- Last answer recall
- Dimensions 71 x 116 x 16.5mm (w x d x h)

**EL240SAB** Sharp Calculator



### SHARP ELW200G CALCULATOR

- 8 digit display
- Dual power with auto power off
- Plastic keys for ease of use
- Tax +/-
- Compact design
- Excellent value for money
- Light weight at only 45 grams
- Dimensions 60 x 105 x 8.1mm (w x d x h)

**ELW200G** Sharp Calculator



### SHARP EL480SR CALCULATOR

- 10 digit LCD screen with punctuation
- Twin power (solar cell & battery LR1130 x 1)
- Large screen display
- Cost-sell-margin function, ideal for business transactions
- Handy mark-up function
- Square root and sign change keys
- Stylish metal cabinet
- Compact wallet to protect calculator
- Dimensions 69 x 119 x 7.1mm (w x d x h)

**EL480SR** Sharp Calculator



## SHARP SCIENTIFIC CALCULATOR

### SHARP EL531WHBK CALCULATOR

- Large, high resolution, 2 line LCD screen with upper 12 digit (5x7 - dot matrix) / lower 10 digit (mantissa) + 2 (exponent) digit
- Up to 272 scientific and statistical functions
- Advanced Direct Algebraic Logic (D.A.L.) for easy equation and answer checking
- Functions include multi-line playback. Constant, fraction, chain and n-Base calculations
- Easy slide-on hard cover to protect calculator from damage
- Dimensions 79.6 x 154.5 x 18.2mm (w x d x h)

**EL531WHBK** Sharp Calculator





## SHARP OPTIONS & CONSUMABLES

### SHARP EA781RBK BLACK INK ROLLER

- Black Ink Roller for the EL2192G, EL1195L, EL1801C, EL2195L, EL2901C, EL2902C, EL2910R

- Minimum order qty 1 packet of 5 rollers

**EA781RBK** Sharp Calculator



### SHARP EA28A AC ADAPTOR

- AC Adaptor for these models: EL1625H, EL2626H, EL1611H, EL1611L, EL1601H, EL1611P, 1801A, 1801L and 1801C

**EA28A** Sharp Calculator



## DATEX CALCULATORS

### DATEX CALCULATORS

**110530** Dual Power Hand Held DH-60

**110531** Dual Power Hand Held DH-60C4 assorted

**110545** Dual Power Desktop DD-611



110531



110530



110545

## AURORA PRINTING CALCULATOR

### AURORA PR600M PRINTING CALCULATOR

12 digit LCD display. Prints 1.6 lines per second. COST, SELL, MARGIN keys. Metric conversion settings. '00' key for faster calculations. Programmable tax function. Decimal and rounding function. Print/non-print function. Paper roll installs inside or outside of case. AC/DC power adaptor included. Uses NR40 ink roller.

Size 48 x 96 x 206mm.

**110781** PR600M

**110790** NR40 Ink Roller



## AURORA DESKTOP CALCULATORS

### AURORA DT210 DUAL POWER CALCULATOR

Dual powered – solar and battery. Ergonomic design body and keys. Square root key for school work and change sign (+/-) key. Auto power off. Size 124 x 94 x 23mm.  
**110700** Desktop DT210



### AURORA DT394 DUAL POWER CALCULATOR

Extra big number 12 digits and display. Adjustable display. Dual powered – solar and battery. Rounding function selector. Auto power off. Size 165 x 109 x 33mm.  
**110702** Desktop DT394



### AURORA DT395 DUAL POWER CALCULATOR

Extra big number 12 digits and display. Adjustable display. Dual powered – solar and battery. Rounding function selector. Auto power off. Size 190 x 127 x 51mm.  
**110704** Desktop DT395



## AURORA DISPLAY CALCULATOR

### AURORA HC-115 ADJUSTABLE WALLET CALCULATOR

Dual powered – solar and battery. All metal adjustable tilt display and body. Protective wallet included. Square root key for school work and mark-up (MU) key. Soft touch rubber keys. Auto power off. Folded size 114 x 69 x 8mm.  
**110750** Hand Held Dual Power HC-115



## AURORA HARDCASE CALCULATOR

### AURORA HC-108X CALCULATOR

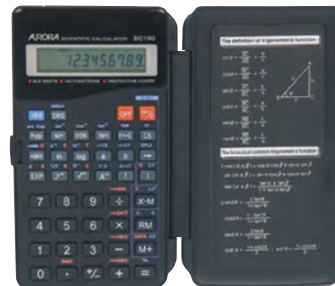
Unique fold-over hardcase design with eight digits and display. Metric conversion chart, square root keys for school work. Soft touch rubber keys, auto power off. Folded size 94 x 56 x 10mm.  
**110754** HC-108X



## AURORA SCIENTIFIC CALCULATOR

### AURORA SC-190 150 CALCULATOR

Eight + two digits LCD screen. Unique fold-over hardcase design. Auto power off. Statistics calculation. 15 levels of parenthesis. One variable/two variable function. BIN/OCT/DEC/HEX calculation. One independent memory. Size 137 x 76 x 10mm.  
**110740** Scientific 150 Function SC-190



## FELLOWES SHREDDERS

# WHY SHRED?

Identity theft occurs when an individual's or company's personal or confidential information is obtained and used by another person without their knowledge. Identity fraud happens when criminals use this information fraudulently to obtain credit, goods or other services in that person's or company's name.

## HOW DOES IDENTITY FRAUD HAPPEN?

Every day you deal with thousands of pieces of information: reports, business plans, financial data, customer pricing, names and addresses, credit card details, etc. Identity thieves will "raid" your rubbish bin to steal this information – they may even steal your bin bags to rummage through them at their leisure. It's faster, easier and can be even more lucrative than burglary. To a fraudster the information you throw out is worth its weight in gold.

Identity theft continues to rise at an astounding rate. It's not only individuals that are putting themselves at risk, but also businesses and organisations putting their customers and employees at risk by not disposing of personal information securely. All countries have data protection legislation in place to ensure that companies dispose of documents safely and securely. But businesses should also consider the prospect of damaging their business and losing customer confidence by not disposing of information securely and therefore putting people at risk.

THE SOLUTION? Shred anything you wouldn't want in the hands of a stranger.

## WHAT TO SHRED?

Every piece of paper or document that contains some form of information or data that may be of use to criminals, fraudsters or competitors should be shredded before it is thrown in the bin or recycled. Confidential documents are obvious and the people who have access to them will be aware of their importance and how to dispose of them. It's the pieces of information that don't seem important which are likely to slip through the net.

### PERSONAL DOCUMENTS

- Bank / Credit card statements
- Credit / Debit card receipts
- Utility bills
- Voided / cancelled cheques
- Documents showing signatures
- Tax returns

### COMPANY DOCUMENTS

- Client lists
- Salary details
- Sales figures
- Financial reports
- Personnel files / CVs
- Patent information
- Medical records
- Legal documents
- Letter-headed paper



## BENEFITS OF ON-SITE SHREDDING:

### ON-SITE SHREDDING IS MORE SECURE

- Peace of mind, knowing your sensitive data is destroyed into completely unreadable particles in front of your own eyes
- Ability to see the shredding process and have confidence that the job is complete
- Documents to be shred by a shredding service often pass through several people over great distances before being destroyed thus subjecting them to countless opportunities for information theft in full, readable pages

### ON-SITE SHREDDING IS LESS COSTLY

- With the right-size shredder for your volume needs, shredding often requires only minutes per day and does not require extra labour costs
- Shredders are a one-time investment that lasts many years
- Shredding services costs are ongoing and add up significantly over time

### ON-SITE SHREDDING IS MORE CONVENIENT

- Shredding at the source is more convenient and more secure by allowing you to get the job done right away
- Compliant with security legislation requiring document destruction
- Available in a variety of security levels to meet your needs

### ON-SITE SHREDDING IS MORE ENVIRONMENTALLY FRIENDLY

- Shredding services add more fuel-consuming, carbon-emitting and traffic-congesting trucks on the road

### ON-SITE SHREDDING - THE LOGICAL CHOICE!

Do you really know what happens to your sensitive documents once the shredding services bin leaves your office? Can you be 100% sure?

Would you put your own highly confidential personal information into a shredding services bin?

## CHOOSING THE RIGHT SHREDDER

Some people think that sheet capacities and bin capacities are the best way to select a shredder. But does sheet capacity indicate a shredder's performance? No - because most people shred twice as much as they think they do. And although some shredders offer high sheet capacities, they may not run very long which limits the amount of paper they will shred.

Fellowes® have made selecting the right model easy because the shredders are already segmented according to their run-times; Personal shredders run from 2 to 45 minutes. Commercial shredders will shred continuously for the disposal of large volumes of paper. So all you have to do to select the right Fellowes® shredder is to answer the following questions.

### 1. WHERE WILL THE SHREDDER BE USED?

- Commercial (medium office 1-5 users and small office 1-3 users)
- Personal (professional 1-3 users, desk side 1 user and home 1 user)

### 2. WHAT LEVEL OF SECURITY IS REQUIRED?

Shredders are also segmented into security categories called DIN levels. The higher the DIN level the better the protection. The panel below depicts the different DIN levels available on Fellowes® Shredders.



## THE SUPERIOR BREED

Over the past ten years, the business world and household consumer have grown more conscious of the crucial need to shred confidential information. During this time the market has been flooded with low-cost shredders which do not stand up to the rigours of document destruction. Making a shredder that will perform under periods of significant usage and do this year after year are not the performance criteria of many shredder manufacturers.

Our promise to you is supported by a commitment to offer the most innovative solutions, exceptional product quality, and first class service and support. These fundamental principles guide our effort to ensure continued satisfaction with every Fellowes® shredder used.

### OUR DEVELOPMENT APPROACH

At Fellowes® we set high performance criteria. We own and control all aspects of product development, engineering, testing and manufacturing. We specify and build only the highest quality components which are produced, assembled and tested with pride by our experienced manufacturing teams.

## EXPERIENCE THE FELLOWES DIFFERENCE

### OUR QUALITY PROCESS

There's a reason Fellowes® shredders are #1 worldwide. We understand that shredders should work properly the first time, every time. That's why Fellowes® drives quality assurance to exceed expectations. Prior to launch, all Fellowes® shredders are subjected to extensive field and laboratory tests including our proprietary continuous abuse test and long-term wear. These tests simulate years of abnormally high use to ensure our products perform reliably, even under the most demanding conditions.

### CONSUMER EXPERIENCE

As the market leader in shredders for over twenty years, Fellowes® is dedicated to improving all aspects of the shredding experience. Our higher standards ensure you get the most reliable shredder you can buy. We believe that is one of the reasons people worldwide trust the Fellowes® brand more than any other on the market. In fact, Fellowes® shredder owners are highly satisfied with their purchase and appreciate the Fellowes® difference as seen on our highly rated customer reviews at [fellowes.com/reviews](https://www.fellowes.com/reviews).

## FELLOWES COMMERCIAL SHREDDERS

### FELLOWES 2127C SHREDDER

Commercial medium office use: 1-5 users

- 4 x 40mm cross cut (DIN level 3)
- 16-18 sheet capacity
- 260mm (A4) entry throat
- 100L bin capacity
- Continuous duty cycle
- Electronic auto start & reverse
- Accepts: staples, paper clips, credit cards and CD/DVDs
- Safety Protection System features electronically-controlled, transparent safety shield in paper entry
- Energy saving mode after 1 hour of inactivity
- Automatic reverse and power cut-off (avoids paper jams)
- Warranty: 2 years machine / 30 years cutters



Croxley Sku	Sheet Capacity	Cut Type	Security Level	Bin Capacity	Cut Size	Shreds
236118	16-18	Cross Cut	3	100L	4x40mm	Staples, Paper Clips, Credit Card, CDs/DVDs

### FELLOWES 2127S SHREDDER

Commercial medium office use: 1-5 users

- 4mm strip cut (DIN level 2)
- 21-23 sheet capacity
- 260mm (A4) entry throat
- 100L bin capacity
- Continuous duty cycle
- Electronic auto start & reverse
- Accepts: staples, paper clips, credit cards and CD/DVDs
- Safety Protection System features electronically-controlled, transparent safety shield in paper entry
- Energy saving mode after 1 hour of inactivity
- Automatic reverse and power cut-off (avoids paper jams)
- Warranty: 2 years machine / 30 years cutters



Croxley Sku	Sheet Capacity	Cut Type	Security Level	Bin Capacity	Cut Size	Shreds
236135	21-23	Strip	2	100L	4mm	Staples, Paper Clips, Credit Card, CD's/DVD's

### FELLOWES 1524C SHREDDER

Commercial small office use: 1-5 users

- 4 x 40mm cross cut (DIN level 3)
- 16-18 sheet capacity
- 240mm (A4) entry throat
- 50L bin capacity
- Continuous duty cycle
- Electronic auto start & reverse
- Accepts: staples, paper clips, credit cards and CD/DVDs
- Safety Protection System features electronically-controlled, transparent safety shield in paper entry
- Energy saving mode after 1 hour of inactivity
- Automatic reverse and power cut-off (avoids paper jams)
- Warranty: 2 years machine / 30 years cutters



Croxley Sku	Sheet Capacity	Cut Type	Security Level	Bin Capacity	Cut Size	Shreds
232902	16-18	Cross Cut	3	50L	4x40mm	Staples, Paper Clips, Credit Card, CD's/DVD's

### FELLOWES 1524S SHREDDER

Commercial small office use: 1-5 users

- 4mm strip cut (DIN level 2)
- 22-24 sheet capacity
- 240mm (A4) entry throat
- 50L bin capacity
- Continuous duty cycle
- Electronic auto start & reverse
- Accepts: staples, paper clips, credit cards and CD/DVDs
- Safety Protection System features electronically-controlled, transparent safety shield in paper entry
- Energy saving mode after 1 hour of inactivity
- Automatic reverse and power cut-off (avoids paper jams)
- Warranty: 2 years machine / 30 years cutters



Croxley Sku	Sheet Capacity	Cut Type	Security Level	Bin Capacity	Cut Size	Shreds
232903	22-24	Strip	2	50L	4mm	Staples, Paper Clips, Credit Card, CD's/DVD's

## FELLOWES PROFESSIONAL SHREDDERS

### FELLOWES 1324C SHREDDER

Commercial small office use: 1-3 users

- 4 x 40mm cross cut (DIN level 3)
- 13-15 sheet capacity
- 240mm (A4) entry throat
- 35L bin capacity
- Continuous duty cycle
- Electronic auto start & reverse
- Safety Protection System features electronically-controlled, transparent safety shield in paper entry
- Energy saving mode after 1 hour of inactivity
- Automatic reverse and power cut-off (avoids paper jams)
- Accepts: staples, paper clips and credit cards
- Warranty: 2 years machine / 30 years cutters



Croxley Sku	Sheet Capacity	Cut Type	Security Level	Bin Capacity	Cut Size	Shreds
232901	13-15	Cross Cut	3	35L	4x40mm	Staples, Paper Clips, Credit Card, CD's/DVD's

### FELLOWES 1324S SHREDDER

Commercial small office use: 1-3 users

- 4mm strip cut (DIN level 2)
- 15-17 sheet capacity
- 240mm (A4) entry throat
- 35L bin capacity
- Continuous duty cycle
- Electronic auto start & reverse
- Safety Protection System features electronically-controlled, transparent safety shield in paper entry
- Energy saving mode after 1 hour of inactivity
- Automatic reverse and power cut-off (avoids paper jams)
- Accepts: staples, paper clips and credit cards
- Warranty: 2 years machine / 30 years cutters



Croxley Sku	Sheet Capacity	Cut Type	Security Level	Bin Capacity	Cut Size	Shreds
232900	15-17	Strip	2	35L	4mm	Staples, Paper Clips, Credit Card

### FELLOWES B-161C SHREDDER

Personal professional use: 1-3 users

- 3 x 23mm cross cut
- 16 sheet capacity
- 240mm (A4) entry throat
- 30L bin capacity
- Auto start & reverse
- Castors
- Convenient pull out bin
- Ultra quiet operation
- Accepts: staples, paper clips, credit cards, CDs/DVDs
- Warranty: 2 year machine warranty



Croxley Sku	Sheet Capacity	Cut Type	Security Level	Bin Capacity	Cut Size	Shreds
236641	16	Cross Cut	3	30L	3x23mm	Staples, Paper Clips, Credit Card, CD's/DVD's

## FELLOWES DESKSIDE SHREDDERS

### FELLOWES MS-450CS SHREDDER

Personal deskside use: 1 user

- 7 sheet capacity
- 2 x 8mm micro-shred cut (DIN 4)
- 230mm throat width
- Electronic auto-start & reverse
- Up to 12 minute duty cycle
- 17 litre bin
- Microshred
- SafeSense
- Silentshred
- 2 year manufacturer's warranty
- 5 year cutter warranty



Croxley Sku	Sheet Capacity	Cut Type	Security Level	Bin Capacity	Cut Size	Shreds
236638	7	Cross Cut	4	17L	2x8mm	Staples, Paper Clips, Credit Card

## FELLOWES MS-460CS SHREDDER

Personal home office use: 1 user

- 10 sheet capacity
- 2 x 8mm micro-shred cut (DIN 4)
- 230mm throat width
- Electronic auto-start & reverse
- Up to 12 minute duty cycle
- 28 litre bin
- Microshred
- SafeSense
- 2 year manufacturer's warranty
- 5 year cutter warranty



Croxley Sku	Sheet Capacity	Cut Type	Security Level	Bin Capacity	Cut Size	Shreds
236639	10	Cross Cut	4	28L	2x8mm	Staples, Paper Clips, Credit Card, CD's/DVD's

## FELLOWES B-152C SHREDDER

Personal desktside use: 1 user

- 4 x 35mm cross cut
- 4 sheet capacity
- 230mm (A4) entry throat
- 15L bin capacity
- Auto start & reverse
- Castors
- Ultra quiet operation
- Convenient pull out bin
- Accepts: staples, paper clips & credit cards
- Warranty: 2 year machine warranty



Croxley Sku	Sheet Capacity	Cut Type	Security Level	Bin Capacity	Cut Size	Shreds
236157	14	Cross Cut	3	15L	4x35mm	Staples, Paper Clips, Credit Card

## FELLOWES B-122C SHREDDER

Personal desktside use: 1 user

- 4 x 38mm cross cut
- 12 sheet capacity
- 240mm (A4) entry throat
- 19L bin capacity
- 10 on/ 30 off duty cycle
- Auto start & reverse
- Ultra quiet operation
- Castors
- Easy open pull out bin
- Accepts: staples, paper clips & credit cards
- Warranty: 2 year machine / 3 years on cutters



Croxley Sku	Sheet Capacity	Cut Type	Security Level	Bin Capacity	Cut Size	Shreds
236628	12	Cross Cut	3	19L	4x38mm	Staples, Paper Clips, Credit Card

## FELLOWES PS-12CS SHREDDER

Personal home office use: 1 user

- 3.9 x 50mm cross cut
- 12 sheet capacity
- 230mm (A4) entry throat
- 15L bin capacity
- Auto start & reverse
- Slim design for easy storage
- SafeSense® Technology
- Accepts: staples, paper clips, credit cards
- Warranty: 2 year machine / 5 years cutters



Croxley Sku	Sheet Capacity	Cut Type	Security Level	Bin Capacity	Cut Size	Shreds
236634	12	Cross Cut	3	15L	3.9x50mm	Staples, Paper Clips, Credit Card

## FELLOWES HOME SHREDDERS

### FELLOWES DS-1 SHREDDER

Home shredder - 1 user

- Features 230mm (A4) throat width
- Electronic auto-start and reverse maximises ease of use
- Stylish mesh pedal bin acts as pull out waste basket
- 2 year full warranty / 5 year cutter warranty



Croxley Sku	Sheet Capacity	Cut Type	Security Level	Bin Capacity	Cut Size	Shreds
236640	11	Cross Cut	3	18L	3.9x35mm	Staples, Paper Clips, Credit Card



### FELLOWES P-48C SHREDDER

Home shredder - 1 user

- Features 230mm (A4) entry throat
- Electronic auto start and reverse maximises ease of use
- Easy lift head for clean and easy emptying
- 1 year full warranty / 3 year cutter warranty

Croxley Sku	Sheet Capacity	Cut Type	Security Level	Bin Capacity	Cut Size	Shreds
236624	8	Cross Cut	3	18L	3.9x50mm	Staples, Credit Card



### FELLOWES P-35C SHREDDER

Home shredder - 1 user

- Features 220mm (A4) throat width
- Auto-start and reverse maximises ease of use
- 1 year full warranty / 3 year cutter warranty



Croxley Sku	Sheet Capacity	Cut Type	Security Level	Bin Capacity	Cut Size	Shreds
236120	8	Cross Cut	3	12L	3.9x40mm	Staples, Credit Card



### FELLOWES P-20 SHREDDER

Home shredder - 1 user

- Features 220mm throat width
- Auto-start and reverse maximises ease of use
- 1 year full warranty

Croxley Sku	Sheet Capacity	Cut Type	Security Level	Bin Capacity	Cut Size	Shreds
236101	5	Strip Cut	1	11L	7mm	





# FELLOWES SHREDDER RANGE

	Croxley Sku	236101	236120	236624	236640	236638	236634	236628	236157
	Model Name	P-20	P-35C	P-48C	DS-1	MS-450Cs	PS-12Cs	B-122C	B-152C
PERFORMANCE	Group	Home	Home	Home	Home	Deskside	Deskside	Deskside	Deskside
	Number of Users	1	1	1	1	1	1	1	1
	Daily Usage (Recommended passes per day)	10-20	10-20	10-20	10-20	30-50			
	Max Recommended Daily Capacity	100	100	160	220	350			
	Sheet Capacity (A4/70gsm)	5	5	8	11	7	12	12	15
	Cut Type	Strip	Cross	Cross	Cross	Cross	Cross	Cross	Cross
	Cut Size	7	3.9 x 40	3.9 x 50	3.9 x 35	2 x 8	3.9 x 50	4 x 38	4 x 35
	Din Level	1	3	3	3	4	3	3	3
	Throat Width mm	220	220	225	230	230	230	230	230
	Average Shred Speed / mpm	5	1.8	3.6	4.3	2.7			
	Duty Cycle / mins	2 on / 25 off	2 min	3-5 on / 15 off	4-5 on / 20 off	8-10 on/ 30 off	4-5 on/ 30 off	10 on/ 30 off	10 on/ 30 off
	Accepts Staples	No	Yes	Yes	Yes	Yes	Yes	Yes	Yes
	Accepts Paper Clips	No	No	No	Yes	No	Yes	Yes	Yes
	Accepts Credit Cards	No	Yes	Yes	Yes	Yes	Yes	Yes	Yes
	Accepts CDs	No	No	No	No	No	No	No	No
INNOVATION	SafeSense™ Technology	No	No	No	Yes	Yes	Yes	No	No
	Energy Savings System	No	No	No	No	No	No	No	No
	Safety Lock	No	Yes	Yes	No	No	Yes		
	Sheet Capacity Selector	No	No	Yes	No	No	No	No	No
	Auto Oil	No	No	No	No	No	No	No	NO
	SilentShred™	No	No	No	No	Yes	No	Yes	Yes
BASIC	Bin Style	Wastebin	Wastebin	Wastebin	Pedal / Pull-out	Pull Out	Pull Out	Pull-out	Pull-out
	Bin Capacity / litres	11	12	18	18	20	15	20	19
	Castors	No	No	No	No	Yes	No	Yes	Yes
	Easy Lift Head	No	Yes	Yes	No	N/A	No	No	No
	Safety Cut-Out on Bin Removal	No	Yes	Yes	Yes	Yes			
	Bin Full Indicator	No	No	No	No	No			
	Auto Start / Stop	Mechanical	Mechanical	Mechanical	Electronic	Electronic	Electronic	Electronic	Electronic
	Reverse	Yes	Yes	Yes	Yes	Yes	Yes		
	Machine Warranty	1	1	2	2	2	2	1	1
Cutter Warranty	1	3	3	5	5	5	1	1	
TECHNICAL	Thermal Overload Protection	Yes	Yes	Yes	Yes	Yes	Yes		
	Thermal Overload Indicator	No	No	No	Yes	Yes	Yes		
	Motor Type	Universal	Universal	Universal	Universal	Induction	Universal		
	Noise Level @ capacity dB	74	70	70	70	45		55	55
DIMENSIONS	Machine Dimensions / mm (H x W x D)	299 x 286 x 153	300 x 322 x 178	348 x 356 x 258	554 x 393 x 274	575 x 354 x 290	406 x 222 x 432	562 x 390 x 239	562 x 390 x 239
	Unit Weight / Kg	1.634	3.34	5.86	8.92	16.5	8.8	12.7	12.7
	Retail Dimensions / mm (H x W x D)	276 x 300 x 162	384 x 362 x 214	406 x 412 x 308	638 x 434 x 346	620 x 420 x 350	464 x 265 x 471	651 x 325 x 475	651 x 325 x 476
	Retail Weight / Kg (inc retail packaging)	1.88	4.2	7.24	10.7	17.2	10.5	13.6	14.6
	Outer Dimensions / mm (H x W x D)	300 x 344 x 610	408 x 378 x 442	434 x 430 x 626	664 x 362 x 448	645 x 440 x 360	491 x 286 x 486	651 x 325 x 475	651 x 325 x 476
	Outer weight / Kg	8.34	9.28	15.66	11.8	17.2	10.6	13.6	13.6
	Quantity per Outer	4	2	2	1	1	1	1	1
SUPPLIES	Oil	N/A	35250	35250	35250	35250	35250	35250	35250
	Bags	36052	36052	36052	36052	36052	36052	36052	36052
SPECIFICATIONS	CRC (EU)	32522	32138	32248	30108	32454	34535	33743	33713
	UPC Bar Code	043859560882	043859514342	043859540129	043859496723	043859508228	043859621231	043859623167	043859622603
	SCS Bar Code	50043859560887	50043859514347	50043859540124	50043859496728	50043859508223	50043859621236	50043859623162	50043859622608

	Croxley Sku	236641	232900	232901	232903	232902	236135	236118
	Model Name	B-161C	1324S	1324C	1524S	1524C	2127S	2127C
PERFORMANCE	Group	Deskside	Small Office	Small Office	Small Office	Small Office	Medium Office	Medium Office
	Number of Users	1	1-5	1-5	1-5	1-5	5-10	5-10
	Daily Usage (Recommended passes per day)							
	Max Recommended Daily Capacity							
	Sheet Capacity (A4/70gsm)	16	15-17	13-15	22-24	16-18	21-23	16-18
	Cut Type	Cross	Strip	Cross	Strip	Cross	Strip	Cross
	Cut Size	3 x 23	4	4 x 40	4	4 x 40	4	4 x 40
	Din Level	3	2	3	2	3	2	3
	Throat Width mm	230	240	240	240	240	260	260
	Average Shred Speed / mpm							
	Duty Cycle / mins		30	30	30	30	Continuous	Continuous
	Accepts Staples	Yes	Yes	Yes	Yes	Yes	Yes	Yes
	Accepts Paper Clips	Yes	Yes	Yes	Yes	Yes	Yes	Yes
	Accepts Credit Cards	Yes	Yes	Yes	Yes	Yes	Yes	Yes
Accepts CDs	Yes	No	No	Yes	Yes	Yes	Yes	
INNOVATION	SafeSense™ Technology	No	No	No	No	No	No	No
	Energy Savings System	No	Yes	Yes	Yes	Yes	Yes	Yes
	Safety Lock		SPS	SPS	SPS	SPS	SPS	SPS
	Sheet Capacity Selector	No	No	No	No	No	No	No
	Auto Oil	No	No	No	No	No	No	No
	SilentShred™	Yes						
BASIC	Bin Style	Pull-out	Cabinet	Cabinet	Cabinet	Cabinet	Cabinet	Cabinet
	Bin Capacity / litres	27	35.2	35.2	50	50	100	100
	Castors	Yes	Yes	Yes	Yes	Yes	Yes	Yes
	Easy Lift Head	No	No	No	No	No	No	No
	Safety Cut-Out on Bin Removal							
	Bin Full Indicator		Yes	Yes	Yes	Yes	Yes	Yes
	Auto Start / Stop		Induction	Induction	Induction	Induction	Induction	Induction
	Reverse		Yes	Yes	Yes	Yes	Yes	Yes
	Machine Warranty	2	2	2	2	2	2	2
	Cutter Warranty	5	30	30	30	30	30	30
TECHNICAL	Thermal Overload Protection							
	Thermal Overload Indicator							
	Motor Type	Induction						
	Noise Level @ capacity dB		60	70	70	70	58	68
DIMENSIONS	Machine Dimensions / mm (H x W x D)	651 x 400 x 309	630 x 395 x 295	630 x 395 x 296	730 x 396 x 295	730 x 396 x 295	869 x 503 x 376	869 x 503 x 376
	Unit Weight / Kg	20.4	19.5	19.9	22.9	22.9	30.4	30.4
	Retail Dimensions / mm (H x W x D)	755 x 465 x 375	690 x 450 x 515	690 x 450 x 515	775 x 515 x 457	775 x 515 x 457	930 x 610 x 489	930 x 610 x 489
	Retail Weight / Kg (inc retail packaging)	22.6	23	23.5	26.5	27	35	35.5
	Outer Dimensions / mm (H x W x D)	765 x 381 x 469	690 x 450 x 515	690 x 450 x 515	775 x 515 x 457	775 x 515 x 457	930 x 610 x 489	930 x 610 x 489
	Outer weight / Kg	24.5	23	23.5	26.5	27	35	35.5
	Quantity per Outer	1	1	1	1	1	1	1
SUPPLIES	Oil	35250		35250		35250		35250
	Bags	36052						
SPECIFICATIONS	CRC (EU)	33933	34228	34224	34215	34212	34408	34404
	UPC Bar Code	043859622849	043859622221	043859622214	043859622177	043859622153	043859620425	043859620388
	SCS Bar Code	50043859622844	50043859622226	50043859622219	50043859622172	50043859622158	50043859620420	50043859620383

## FELLOWES SHREDDER ACCESSORIES

### FELLOWES SHREDDER BAGS

- For clean & easy waste disposal



Order No	Size	Bag Dimensions	Bag Volume	Qty per Carton
236154	Small	670mm x 1240mm	55	100
236153	Medium	760mm x 1520mm	75	100
236151	Large	895mm x 1600mm	98	50
236152	Extra Large	1260mm x 2040mm	178	50

### FELLOWES SHREDDER OIL

- Enhances the performance of all cross-cut shredders
  - As a general rule, a shredder should be oiled every time the bin is emptied. This can be achieved by squeezing a line of oil directly over the shredder's paper entry and pressing the forward button
  - 350ml squeezable bottle
- 236150** Shredder oil



## FELLOWES LAMINATION

### WHY LAMINATE?

Lamination is the application of a plastic film to the surface of an item. By adding a plastic coating to the paper or card, a document becomes more durable, with a quality, professional-looking finish. Lamination protects documents from fingerprints, smudges and tears and also enhances the colour and contrast of the print. The process keeps materials in like-new condition for many years, preserving colour and increasing durability. Laminated paper or card can be used for presentation purposes, without additional backing or frames, creating a variety of opportunities for display. Using a high-quality laminator will preserve and protect your documents and important papers from everyday wear and tear.

**Something that is laminated looks better and lasts!**

#### BENEFITS OF LAMINATION:

- Laminated materials can be reused; they are waterproof and wipe clean
- Valuable graphics are protected from spills
- Strengthens documents; ideal for posters and signs
- Protects from the weather; ideal for external signage
- Improves the appearance of materials; deepens and brightens colours, enhances the contrast
- Provides a variety of finishes; gloss, matt pouches are available
- Eliminates creases and wrinkles; provides a perfect finish

### WHAT TO LAMINATE?

Lamination can be used for a wide variety of documents both in the home and in the workplace.

#### IN THE WORKPLACE




- Maintenance check list
- Outdoor directional signs
- Sales presentation materials
- Menus
- Instructional materials
- Sales promotion material
- Business & ID cards
- Identification cards
- Telephone lists
- Maps & directions

#### IN THE HOME

- Birthday cards
- Pocket / wallet cards
- Dinner mats
- Luggage tags
- Printed digital photos
- Golf handicap cards
- Activity & training schedules
- Garden stakes
- Children's artwork
- School timetables

# CHOOSING THE RIGHT LAMINATOR

Fellowes laminators are classified by usage, how often they are used and the type of pouches they accept. The thicker the pouches accepted the more versatile the machine and the more applications they can be used for. Laminating pouches are available in different thicknesses which are measured in microns - the higher the number of microns the thicker the pouch.

MAX POUCH THICKNESS	LEVEL OF PROTECTION	TYPICAL USAGE
<b>Enhance 80</b> MICRONS	BASIC PROTECTION	
<b>Impress 100</b> MICRONS	EVERYDAY PROTECTION	
<b>Capture 125</b> MICRONS	ADVANCED PROTECTION	

Fellowes have made selecting a laminator easy - all you have to do is answer the following questions.

## 1. WHERE WILL THE LAMINATOR BE USED?

- Office (large office heavy use, office frequent use and small office regular use)
- Personal (home office moderate use and home occasional use)

## 2. WHAT SIZE DOCUMENTS DO YOU WANT TO LAMINATE?

Fellowes offer laminators with 2 different sizes of entry as shown by the icons below. The larger the width the more flexibility there is to laminate different sized documents.



### A3 = MAX 32CM

Laminates all sizes up to A3 including A4, cards and photographs.



### A4 = MAX 22CM

Laminates all sizes up to A4 including A5, A6, cards and photographs.

## 3. WHICH LAMINATOR FEATURES WILL MAKE YOUR JOB EASIER?

Fellowes laminators lead the market through user-focused innovation. Our unique features make our multi-award-winning laminators easier, safer and more reliable than alternative models.

### SAFETY



HeatGuard™ - patented safety system reduces the surface temperature of Fellowes laminators by up to 50%, compared to equivalent models, so they are always safe to touch. This safety feature also reduces the amount of energy used.

### PERFORMANCE



The Easi-Access mechanism allows the user to open the machine to clean and maintain the laminating rollers ensuring consistent, high quality lamination and the longevity of the machine. It also enables users to safely retrieve mis-fed documents.

### EFFICIENCY



All Fellowes laminators are 100% Jam Free\*. The ClearPath low-friction mechanism allows the smooth flow of the document and ensures that the laminator does not jam.

\*when using Fellowes branded pouches



The AutoLam pouch detection and speed adjustment automatically finds the optimum speed/heat combination for different pouch and document combinations and makes real-time changes if required for best laminating results.



Reduces energy consumption by switching the laminator into stand by mode after a period of inactivity

## FELLOWES LAMINATOR SELECTION GUIDE

Use the simple guide below to choose the right laminator for your needs.

LARGE OFFICE				VOYAGER A3
OFFICE	DO YOU WANT TO LAMINATE DOCUMENTS USING PRESERVE 250 POUCHES?	YES		VENUS A3
		NO		JUPITER A3
SMALL OFFICE	DO YOU WANT TO LAMINATE A3 DOCUMENTS?	YES		SATURN A3
		NO		SATURN A4
HOME OFFICE	DO YOU WANT TO LAMINATE A3 DOCUMENTS?	YES		COSMIC A3
		NO		COSMIC A4
HOME	DO YOU WANT TO LAMINATE A3 DOCUMENTS?	YES		MARS A3
		NO		MARS A4

### FELLOWES LARGE OFFICE LAMINATION

#### FELLOWES VOYAGER A3 LARGE OFFICE LAMINATOR

Engineered to provide superior results and equipped with unique innovative features to improve efficiency, durability and ease of use, this quality machine is designed for heavy use in a busy office environment and guarantees excellent results.

- Unique heated belt-driven technology for ultimate jam-proof laminating
- The only laminator that allows instant changes between different pouches without heat-up or cool-down time
- Adjustable entry guide – makes sure the items are supported fully when inserted to avoid mis-feeds
- CleanMe auto-glue sensor – patented system warns the user to clean the laminator internally if glue or dirt has built up
- LCD display with advanced functions to guide users through the laminating process with greatest ease
- Auto Reverse function detects mis-feeds and overloads to prevent paper jams and ensures safe operation



Croxley Sku	Laminating Mechanism	Entry Width	Heat up Time	Temp Adjustment	Speed	Max Micron
245631	Belt drive	330mm	4 mins	Auto	90cm/min	250 Micron

### FELLOWES OFFICE LAMINATION

Fellowes office laminators are of superior quality and feature 4-roller technology for reliable laminating results. They can laminate a wide variety of pouch types up to 250 micron, ensuring that these machines are ideal for a wide variety of applications and are ideal for use in a busy office environment.

#### FELLOWES VENUS A3 OFFICE LAMINATOR

- Interactive LCD interface for ultimate user-friendliness
- Manual reverse function ensures safe operation at all times
- Unique 'Easi-Access' system ensures continuous lamination quality
- Active cooling system enables rapid shifts from hot to cooler settings
- Starter kit for 10 documents included
- 2 year warranty



Croxley Sku	Laminating Mechanism	Entry Width	Heat up Time	Temp Adjustment	Speed	Max Micron
245630	4	330mm	4 mins	6	50cm/min	250 Micron

## FELLOWES JUPITER A3 OFFICE LAMINATOR

- LED user interface makes using the laminator easy
- Manual reverse function ensures safe operation at all times
- Unique "Easi-Access" system ensures continuous lamination quality
- Active cooling system enables rapid shifts from hot to cooler settings
- Starter kit for 10 documents included
- 2 year warranty



Croxley Sku	Laminating Mechanism	Entry Width	Heat up Time	Temp Adjustment	Speed	Max Micron
245629	4	330mm	4 mins	5	50cm/min	175 Micron

## FELLOWES SMALL OFFICE LAMINATION

Our stylish small office laminators with their sophisticated design are engineered for performance, efficiency and durability. They provide easy, safe and jam-free laminating with great results in the busy-small office environment.

### FELLOWES SATURN A3 / SATURN A4 SMALL OFFICE LAMINATOR

- HeatGuard™ ensures laminator is always safe to touch.
- Carry handle and stand-up feet with cable tidy for easy transportation
- Release mechanism for clearing mis-fed documents
- Starter kit for 10 documents included
- 2 year warranty



Croxley Sku	Size	No. of Rollers	Entry Width	Heat up Time	Temp Adjustment	Speed	Max Micron
245628	A3	2	330mm	6 mins	2	30cm/min	100 Micron
245627	A4	2	220mm	6 mins	2	30cm/min	100 Micron

## FELLOWES HOME & HOME OFFICE LAMINATION

Engineered with safety and ease-of-use at the forefront of the design brief, these laminators are reliable, safe and simple to use, and easy to clean with their wipe-clean surfaces. They are easy to store and effortless to operate – making them ideal for home office use and hobby and craft applications.

### FELLOWES COSMIC A3 / COSMIC A4 HOME OFFICE LAMINATOR

- HeatGuard™ ensures laminator is always safe to touch
- Carry handle and stand-up feet with cable tidy
- Release mechanism for clearing mis-fed documents
- Starter kit for 10 documents included
- 2 year warranty



Croxley Sku	Size	No. of Rollers	Entry Width	Heat up Time	Temp Adjustment	Speed	Max Micron
245626	A3	2	330mm	6 mins	2	30cm/min	100 Micron
245625	A4	2	220mm	6 mins	2	30cm/min	100 Micron

## FELLOWES MARS A3 / MARS A4 HOME LAMINATOR

- Easy operation and wipe-clean surface
- Carry handle for easy transportation
- 2 year warranty



Croxley Sku	Size	No. of Rollers	Entry Width	Heat up Time	Temp Adjustment	Speed	Max Micron
245624	A3	2	330mm	7 mins	FIXED	30cm/min	80 Micron
245623	A4	2	220mm	7 mins	FIXED	30cm/min	80 Micron

## FELLOWES LAMINATOR SPECIFICATIONS

	Large Office	Office	Small Office		Home Office		Home		
	Voyager A3	Venus A3	Jupiter A3	Saturn A3	Saturn A4	Cosmic A3	Cosmic A4	Mars A3	Mars A4
Order No.	245631	245630	245629	245628	245627	245626	245625	245624	245623
Format - Laminating Width (mm)	A3 - 330	A3 - 330	A3 - 330	A3 - 330	A4 - 220	A3 - 330	A4 - 220	A3 - 330	A4 - 220
Pouch Thickness (mic)	80 - 250	80 - 250	80 - 175	80 - 125	80 - 125	80 - 100	80 - 100	80	80
Entry Width	330	330		330	220	330	220	330	220
Heating System	Belt	Preheater / Hot Shoe	Preheater / Hot Shoe	Hot Shoe	Hot Shoe	Hot Shoe	Hot Shoe	Hot Shoe	Hot Shoe
Number Rollers	Belt	4	4	2	2	2	2	2	2
Heat Up Time (min)	4	4	4	6	6	6	6	7	7
Temperature Adjustment (nb settings)	Auto	6	5	2	2	2	2	Fixed	Fixed
Lamination Speed (cm/mm)	90	50	50	30	30	30	30	30	30
Speed Adjustment	•								
100% Jam Free	Auto	•	•	•	•	•	•	•	•
AutoLam	•								
HeatGuard™ (cool to touch)	•	•	•	•	•	•	•		
Easi-Access Opening	•	•	•						
Full Logic LCD Interface Display	•	•							
Logic LED Interface Display			•						
Basic LED Interface Display				•	•	•	•	•	•
Release Mechanism				•	•	•	•		
Reverse Mechanism	•	•	•						
Active Cooling System	•	•	•						
Sleep Mode	•	•	•						
Photocapable	•	•	•	•	•	•	•	•	•
Machine Warranty (years)	2	2	2	2	2	2	2	1	1
Machine Dimensions / mm (H x W x D)	165 x 630 x 230	116 x 554 x 220	116 x 554 x 220	90 x 502 x 200	86 x 410 x 202	94 x 500 x 204	84 x 410 x 200	78 x 496 x 166	82 x 412 x 56
Unit Weight / Kg	9.9	6.8	6.76	3.14	2.36	3.12	2.36	2.52	1.78
Outer Dimensions / mm (H x W x D)	295 x 260 x 725	334 x 218 x 640	338 x 218 x 640	250 x 320 x 554	266 x 318 x 464	260 x 316 x 552	268 x 308 x 468	238 x 282 x 580	220 x 256 x 476
Outer Weight / Kg	12	8.96	8.78	8.48	6.72	8.36	6.78	6.46	4.64
Quantity per Outer	1	1	1	2	2	2	2	2	2
CRC	57045	57021	57019	57310	57309	57308	52100	57307	57306
EAN	043859568833	043859511150	043859511136	043859517633	043859517626	043859517619	043859496150	043859517602	043859517596
SCS	50043859568838	50043859511155	50043859511131	50043859517638	50043859517621	50043859517614	50043859496155	50043859517607	50043859517591

## FELLOWES LAMINATION SUPPLIES

Fellowes lamination supplies are produced from high quality materials and engineered to ensure they have the right combination of ingredients to provide excellent results when used with all types of laminators.

### FELLOWES LAMINATING POUCHES

High quality glossy laminating pouches available in a wide variety of sizes for all your lamination requirements. Fellowes have developed a unique naming strategy to make it easy to select the right thickness of pouch for the level of protection you require.

Croxley Sku	Description	Format/Size	Qty/Pk	Outer
<b>Enhance80 Micron</b>				
245521	Glossy Pouches 80mic	A3	100	245521
245520	Glossy Pouches 80mic	A3	25	245520
245506	Glossy Pouches 80mic	A4	100	245506
245505	Glossy Pouches 80mic	A4	25	245505
<b>Impress100 Micron</b>				
245522	Glossy Pouches 100mic	A3	100	245512
245507	Glossy Pouches 100mic	A4	100	245507
245500	Glossy Pouches 100mic	A5	100	245500
<b>Capture125 Micron</b>				
245526	Glossy Pouches 125mic	A3	100	245526
245516	Glossy Pouches 125mic	A4	100	245516



## FELLOWES BINDING

### WHY BIND?

When you've worked hard on a project and invested time and money in your presentation, you need to give it the professional finish it deserves to ensure you make the greatest impact. Binding is the perfect way to present your documents.

#### BENEFITS OF BINDING:

- Present a professional, high quality image
- Enhance usability because bound documents are easier to handle and store
- Protect and preserve materials which otherwise can become dog-eared with age and frequent use
- Add style and colour through a wide choice of covers, combs and wires

### WHAT TO BIND?

Binding can be used for a wide variety of documents, both at the home and in the work place.

#### IN THE WORK PLACE

##### HUMAN RESOURCES

- Policy documents
- Training manuals
- Health & Safety manuals

##### PURCHASING DEPARTMENTS

- Supplier proposals
- Contracts and agreements
- Reference manuals

##### SALES & MARKETING

- Sales proposals
- Sales reports
- Marketing plans

##### ACCOUNTS

- Suppliers' details
- Year-end accounts
- Monthly reports

#### IN THE HOME

- Assignments & homework
- Scrap books & hobby craft
- Recipes



## TYPES OF BINDING

Different binding systems are suitable for different applications. Fellowes offer 2 types of binding options.

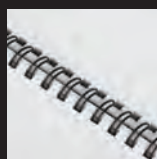


### PLASTIC COMB BINDING

Plastic comb binding is the most popular and economical binding system, it's practical, easy to use and very flexible.

### BENEFITS

- Cost-effective, quick and simple to use
- Documents are easy to use; they can be opened out completely flat so they are easy to read and photocopy. They are ideal for presentations
- Can add and remove pages easily



### WIRE BINDING

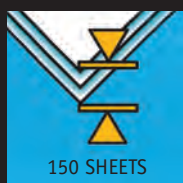
Wire binding gives your documents a stylish, top-quality finish. It's permanent and secure.

### BENEFITS

- Completely secure document, can not be re-opened.
- Creates the same durable look used by professional printers.
- Documents can be opened out completely flat so they are easy to read and photocopy and are ideal for presentations.

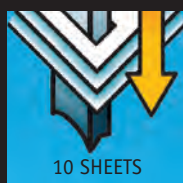
## CHOOSING THE RIGHT BINDER

Fellowes binders are classified according to how often they will be used and the size of the documents they can bind which is measured on binding capacity, punch capacity and comb size.



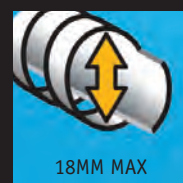
### BINDING CAPACITY

The higher the binding capacity, the larger the document you can bind.



### PUNCH CAPACITY

The higher the punch capacity, the quicker the process.



### MAX ELEMENT SIZE

Maximum comb and wire diameter suitable for use with the binder.

The larger the binding capacity the more versatile the machine. Comb binders which are ideal for personal use can bind documents up to 150 sheets and are suitable for use in the Home and Home Office. Fellowes provides comb and wire office binders which are ideal for the workplace. They can bind large documents up to 500 sheets and 130 sheets respectively. Fellowes has made selecting a binder easy – all you have to do is answer the following questions.

### 1. WHERE WILL THE BINDER BE USED?

- Office (large office heavy use, office frequent use and small office regular use)
- Personal (home office moderate use and home occasional use)

### 2. MANUAL OR ELECTRIC BINDER?

#### ELECTRIC PUNCHING

Provides ultimate ease of use. Electric punch button makes it easier to punch through large documents and also work through large quantities of documents quickly.

#### MANUAL PUNCHING

Strong metal punch handle on Fellowes machines makes it easy to punch through documents.

### 3. WHAT FEATURES MAKE BINDING EASIER?

Fellowes binders are equipped with many user-friendly features which make them easier and quicker to use than many alternatives.



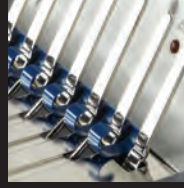
**Satellite** SYSTEM 

SATELLITE removable binding platform allows multiple users to punch and bind simultaneously, saving time in the work place.





**FULL WIDTH PUNCHING HANDLE**  
Suits any user as it can be used left & right handed.



**ANGLED COMB RAKE**  
All Fellowes comb binders have an angled comb rake of 15 degrees to make loading punched sheets much easier.



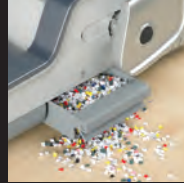
**HEATSHIELD™**  
A safety barrier designed to prevent accidental contact with the heating plate. The barrier is opened manually and closes.



**SLEEP MODE**  
Is activated after periods of inactivity, reducing energy consumption and ensuring safe operation.



**PRESELECTABLE CLOSURE CONTROL**  
For easy wire closure - ideal for binding multiple documents.



**CHIP TRAY**  
With burst out feature to eliminate jams.



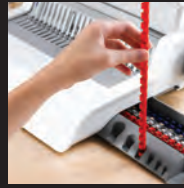
**BACK MARGIN ADJUSTMENT SELECTOR**  
Increases stability for larger documents.



**PUNCH SELECTION**  
For a variety of document sizes.



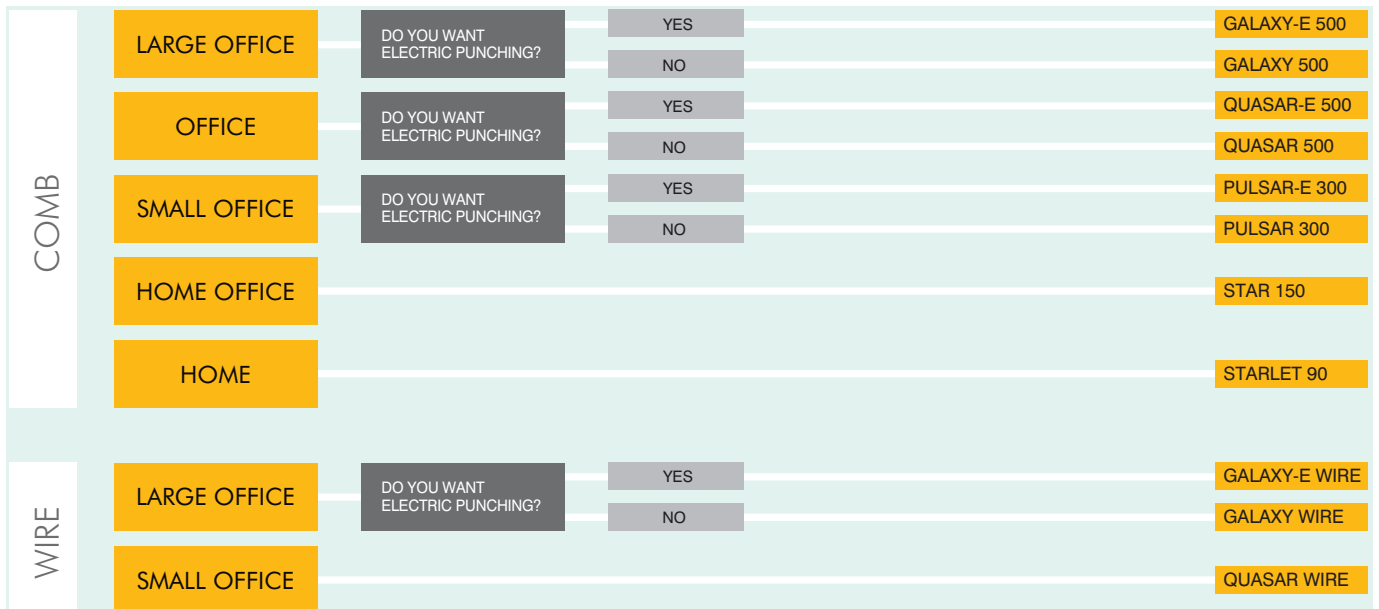
**ADJUSTABLE EDGE GUIDE**  
Aligns sheets accurately.



**COMB STORAGE TRAY**  
With patented comb and document measure enables users to select the right comb for their requirements.

## FELLOWES BINDER SELECTION GUIDE

Use the guide below to choose the right binder for your needs.



## FELLOWES OFFICE COMB BINDERS

High performance comb binders designed for busy office environments. They come equipped with a full metal punching mechanism to power through large quantities of paper and achieve excellent results time after time.

### Satellite SYSTEM



Removable binding platform allows multiple users



Adjustable edge guide



Comb measure and storage



Angled comb rake



Chip tray

## FELLOWES GALAXY-E 500 / GALAXY 500 OFFICE COMB BINDER

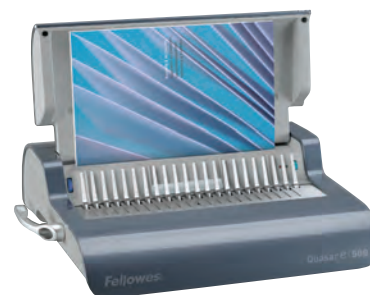
- Galaxy: Full width punch handle requires minimal effort
- Galaxy-E: Electric punching for ultimate ease of use
- Back margin adjustment for various sheet sizes
- Punch selection for A4 & A5 sized documents
- Patented comb & document measure
- Front access full size storage tray for combs and documents
- Adjustable edge guide aligns sheets accurately
- Vertical sheet loading ensures consistent punch alignment
- 2 year warranty



Croxley Sku	Binding System	Manual/Electric	Punch Capacity	Binding Capacity	Comb Size	Started Pack Included
235822	Comb	Electric	25	500	50mm	20 Docs
235821	Comb	Manual	25	500	50mm	20 Docs

## FELLOWES QUASAR-E 500 / QUASAR 500 OFFICE COMB BINDER

- Quasar: Full width punch handle requires minimal effort
- Quasar-E: Electric punching for ultimate ease of use
- Patented comb & document measure
- Adjustable edge guide aligns sheets accurately
- Vertical sheet loading ensures consistent punch alignment
- 2 year warranty



Croxley Sku	Binding System	Manual/Electric	Punch Capacity	Binding Capacity	Comb Size	Started Pack Included
235820	Comb	Electric	20	500	38mm	10 Docs
235819	Comb	Manual	20	500	38mm	10 Docs

## FELLOWES PULSAR-E 300 / PULSAR 300 SMALL OFFICE COMB BINDER

- Electric punching for ultimate ease of use (Pulsar-E only)
- Patented comb & document measure
- Adjustable edge guide aligns sheets accurately
- Vertical sheet loading ensures consistent punch alignment
- 2 year warranty



Croxley Sku	Binding System	Manual/Electric	Punch Capacity	Binding Capacity	Comb Size	Started Pack Included
235818	Comb	Electric	15	300	15mm	10 Docs
235817	Comb	Manual	15	300	15mm	10 Docs

## FELLOWES PERSONAL COMB BINDERS

Personal comb binders are ideal for small to medium sized documents and are designed with added unique features to make the binding process quicker and easier. They are ideal for home and small office use.



Adjustable edge guide



Comb measure and storage



Angled comb rake



Chip tray

## FELLOWES STAR 150 HOME OFFICE COMB BINDER

- Full width punch handle requires minimal effort
- Patented comb & document measure
- Adjustable edge guide aligns sheets accurately
- Vertical sheet loading ensures consistent punch alignment
- 2 year warranty



Croxley Sku	Binding System	Manual/Electric	Punch Capacity	Binding Capacity	Comb Size	Started Pack Included
235816	Comb	Manual	10	150	18mm	No

## FELLOWES STARLET 90 HOME COMB BINDER

- Patented comb & document measure
- Adjustable edge guide aligns sheets accurately
- Vertical sheet loading ensures consistent punch alignment
- 2 year warranty



Croxley Sku	Binding System	Manual/Electric	Punch Capacity	Binding Capacity	Comb Size	Started Pack Included
235815	Comb	Manual	7	90	12mm	No

## FELLOWES WIRE BINDERS

Stylish, durable wire binders with unique, user-friendly features ensure they are ideal for office use, providing the best solution for a high-end, professional finish.



Preselectable closure control for easy wire closure - ideal for binding multiple documents



Adjustable edge guide



Comb measure and storage



Angled comb rake



Chip tray

## FELLOWES GALAXY-E WIRE / GALAXY WIRE LARGE OFFICE WIRE BINDER

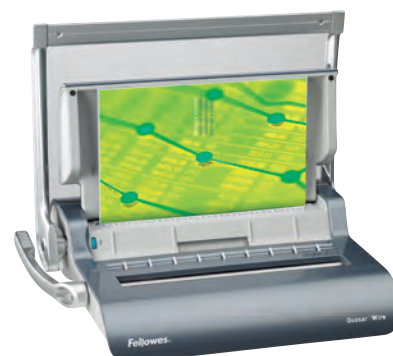
- Galaxy Wire: Full width punch handle requires minimal effort
- Galaxy-E Wire: Electric punching for ultimate ease of use
- Adjustable edge guide aligns sheets accurately
- Patented wire & document measure and storage
- 2 year warranty



Croxley Sku	Binding System	Manual/Electric	Punch Capacity	Binding Capacity	Comb Size	Starter Pack Included
235825	Wire	Electric	20	130	14mm	20 Docs
235824	Wire	Manual	20	130	14mm	20 Docs

## FELLOWES QUASAR WIRE OFFICE WIRE BINDER

- Full width punch handle requires minimal effort
- Adjustable edge guide aligns sheets accurately
- Patented wire storage and document measure
- 2 year warranty



Croxley Sku	Binding System	Manual/Electric	Punch Capacity	Binding Capacity	Comb Size	Started Pack Included
235823	Wire	Manual	15	130	14mm	20 Docs

## FELLOWS BINDING SPECIFICATIONS

Comb Binders								
	Galaxy-E 500	Galaxy 500	Quasar-E 500	Quasar 500	Pulsar-E 300	Pulsar 300	Star 150	Starlet 90
Order No.	235822	235821	235820	235819	235818	235817	235816	235815
Manual / Electric	Electric	Manual	Electric	Manual	Electric	Manual	Manual	Manual
Sheet Binding Capacity (80gsm)	500	500	500	500	300	300	150	90
Sheet Punching Capacity (80 gsm)	25	25	20	20	15	15	10	7
Maximum Comb Size	50mm	50mm	50mm	50mm	38mm	38mm	18mm	12mm
Comb Storage	•	•	•	•	•	•	•	•
Document Storage	•	•						
Document & Comb Sizing Guide	•	•	•	•	•	•	•	•
Satellite Removable Binding Platform	•	•						
Chip Tray	Both Sides	Both Sides	Single Side	Single Side	Single Side	Single Side	Single Side	Single Side
Vertical Document Loading	•	•	•	•	•	•	•	•
Punch Handle		Full		Full		Single	Full	Single
Vertical Storage							•	•
Adjustable Punch Selection	•	•						
Adjustable Edge Guide	•	•	•	•	•	•	•	•
Machine Warranty	2	2	2	2	2	2	2	2
Includes Document Starter Pack	20 docs	20 docs	10 docs	10 docs	10 docs	10 docs		
Machine Dimensions / mm (H x W x D)	152 x 490 x 446	152 x 526 x 446	130 x 426 x 398	126 x 456 x 418	130 x 432 x 388	130 x 456 x 396	80 x 448 x 280	80 x 444 x 284
Unit Weight / Kg	13.06	10.28	9.92	7.52	9.52	6.9	4.26	3.94
Outer Dimensions / mm (H x W x D)	510 x 216 x 596	508 x 218 x 596	498 x 218 x 538	502 x 220 x 538	502 x 222 x 532	498 x 220 x 540	374 x 298 x 528	374 x 300 x 524
Outer Weight / Kg	15.36	12.58	12.26	9.62	12.32	9.24	10.88	10.3
Quantity per Outer	1	1	1	1	1	1	2	2
CRC	56221	56220	56210	56208	56217	56200	56305	56303
UPC Bar Code	043859529971	043859522255	043859516452	043859512140	043859516438	043859512102	043859516421	043859515554
SCS Bar Code	50043859529976	50043859522250	50043859516457	50043859512145	50043859516433	50043859512107	50043859533515	50043859533508

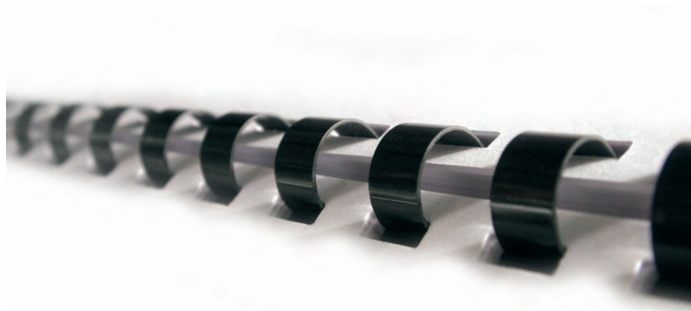
Wire Binders			
	Galaxy E Wire	Galaxy Wire	Quasar Wire
Order No.	235825	235824	235823
Manual / Electric	Electric	Manual	Manual
Sheet Binding Capacity (80gsm)	130	130	130
Sheet Punching Capacity (80 gsm)	20	20	15
Maximum Comb Size	14mm	14mm	14mm
Wire Storage	•	•	•
Document Storage	•	•	
Document & Wire Sizing Guide	•	•	•
Chip Tray	Both Sides	Both Sides	Single Side
Vertical Document Loading	•	•	•
Punch Handle	Full	Full	Single
Visual Closure Control	•	•	•
Pre-selectable Closure Control	•	•	
Adjustable Edge Guide	•	•	•
Machine Warranty	2	2	2
Includes Document Starter Pack	20 docs	20 docs	20 docs
Machine Dimensions / mm (H x W x D)	154x506x452	154x506x452	132x470x412
Unit Weight / Kg	12.88	12.88	7.38
Outer Dimensions / mm (H x W x D)	510x218x596	510x218x596	492x222x536
Outer Weight / Kg	15.48	15.48	10.2
Quantity per Outer	1	1	1
CRC	56226	56224	52241
UPC Bar Code	043859530045	043859530021	043859530014
SCS Bar Code	50043859530040	50043859530026	50043859530019

## FELLOWES BINDING SUPPLIES

Fellowes offer a wide range of binding supplies for every binding solution. They are not only manufactured to the highest standards but also feature packaging designs which make selecting the right cover and comb for your document easier than ever.

### FELLOWES BINDING PLASTIC COMBS

Provide a versatile binding solution because they can be reopened after binding to add or remove pages.



Plastic Comb (Round) - 21 Rings, Pitch 14.28mm, Commercial Pack

Croxley Sku	Sheets	Size (mm)	Qty / Pk
235200	2-20	6	25
235208	21-40	8	25
235216	41-55	10	25
235224	56-80	12	25
235405	21-40	8	100
235410	41-55	10	100
235415	56-80	12	100
235420	81-100	14	100
235424	101-120	16	100

### FELLOWES BINDING WIRE COMBS

Providing a stylish and professional finish to any printed document, wire combs offer a permanent binding solution.



Wire Comb (A4) - 34 Loops, Pitch 3:1", Commercial Pack

Croxley Sku	Sheets	Size (mm)	Qty / Pk
235350	1-35	6	100
235351	36-60	8	100
235352	61-80	11	100
235353	81-100	12.7	100

### FELLOWES LEATHER BOARD & PVC COVERS

High quality leather board covers have a deeply embossed finish with leathered grain effect. They provide a quality result and effective document protection with a robust weight of 250gsm. PVC covers strengthen documents enabling the front cover to remain visible through the protective PVC cover.



Leather Board / Heavy Weight, Commercial Pack

Croxley Sku	Weight	Size (mm)	Qty / Pk
235630	Light Weight	0.15 mm	100
235631	Medium Weight	0.2 mm	50
235632	Heavy Weight	0.24 mm	50

Leather Board / Heavy Weight, Pack

Croxley Sku (Black)	Croxley Sku (Blue)	Weight (gsm)	Size	Qty/Pk
235628	235629	250	A4	25
235626	235627	250	A4	100

## DIXON BINDING COVERS

### DIXON BINDING COVERS

Dixon offers good quality binding covers – clear, frosted or textured leather board as well as binding indices.

#### Clear Covers

- 235651 0.15mm Lightweight Pack 20
- 235657 0.15mm Lightweight Pack 100
- 235658 0.18mm Medium Weight Pack 100

#### Frosted Covers

- 235654 0.25mm Heavyweight Pack 20

#### Textured Covers 300gsm

- 235621 Black Pack 20
- 235641 Black Pack 100
- 235642 Blue Pack 100
- 235644 Red Pack 100

#### Binding Indices

- 235700 A4 White 5 Tab
- 235701 A4 White 10 Tab
- 235706 A4 Laminated 5 Tab
- 235707 A4 Laminated 10 Tab



## FELLOWES TRIMMERS AND GUILLOTINES

### WHY USE A CUTTING SYSTEM?

Cutting machines enable the user to trim and cut large amounts of paper in one go and can also be used to make precise cuts to shape or divide documents or projects. They are operated using one smooth movement which ensures precision cutting and a professional finish. They save time and effort and are an essential tool to use when trimming or cropping large stacks of paper, books, and laminated documents. They are also ideal for digital photographs.

### WHAT CAN A CUTTING SYSTEM BE USED FOR?

#### IN THE HOME

- Photographs
- Greeting Cards
- CD Covers
- Scrapbooks
- Posters

#### IN THE WORKPLACE

- Presentations
- Paperboard
- Laminated Documents
- Foam Board
- Large Volumes Of Paper
- Leaflets



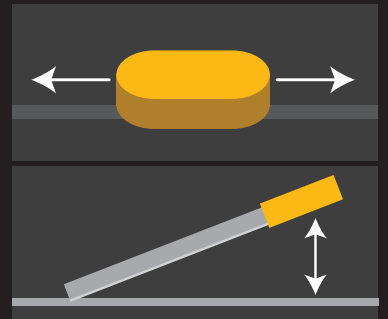
### TYPES OF CUTTING SYSTEM?

#### ROTARY TRIMMERS

Rotary paper trimmers have a round blade enclosed in a cutting head that slides along a metal guide bar. They are ideal for making straight cuts through material of small thickness, and are widely used by photographers, advertising and graphics studios and schools. They deliver great burr-free cuts with paper, plastic sheets, special papers, soft card and laminated materials.

#### GUILLOTINES

Paper guillotines are a premium solution, designed for high-volume cutting. The paper can be clamped into place and the handle is brought down in one motion to cut through the paper with straight, clean cuts. They are ideal for cutting thick stacks of paper.



### CHOOSING THE RIGHT CUTTING SYSTEM

Fellowes have made selecting a cutting system easy - all you have to do is answer the following questions.

#### 1. WHERE WILL THE CUTTING SYSTEM BE USED?

- Office (office heavy use and small office frequent use)
- Personal (home office moderate use and home occasional use)

#### 2. WHAT SIZE IS REQUIRED?

Fellowes offer cutting systems with 2 different sizes of entry as shown by the icons below. The larger the width, the more flexibility there is to trim different sized documents.



#### PAPER SIZE

Indicates the maximum paper size the machine will accommodate

#### 3. WHAT FEATURES WILL MAKE YOUR JOB EASIER?

Our range of trimmers and guillotines is set apart from the rest of the market by our unique features, designed to make cutting safer and easier than ever before:



Unique SafeCut™ blade cartridges encapsulate the stainless steel blade so it is only exposed when trimming, ensuring maximum safety & ease-of-use.



Heavy duty, stainless steel SafeCut™ rotary blade, encapsulated for user safety – accepts materials including card, plastic sheet and foam board.



Full size SafeCut™ Guard prevents mishandling during operation. It is preassembled to prevent human errors during set-up and folds down for storage. The blade cannot be operated unless SafeCut™ Guard is in upright, protective position.

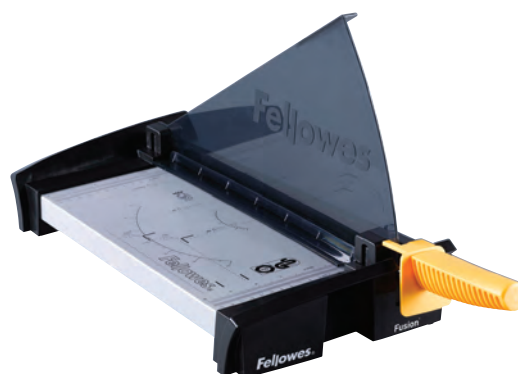


## FELLOWES OFFICE GUILLOTINE

Heavy duty, durable guillotines designed to cut through large volumes of paper and provide a sharp, clean cut result in one fluid motion.

### FELLOWES FUSION A3 GUILLOTINE

- Solid metal base with integrated anti-slip feet
- Paper clamp minimises paper movement when cutting
- Carry points for easy portability
- 2 year machine warranty



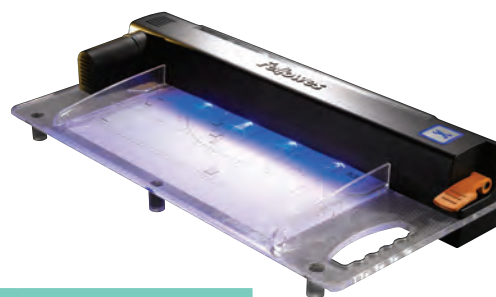
Croxley Sku	Blade Type	Page Format	Cutting Length	Cutting Capacity	Blade Storage	No. of Blades Included
236443	Guillotine	A3	455mm	10	No	20 Fixed Blade

## FELLOWES ELECTRIC OFFICE TRIMMER

As leading global innovators of business machines, Fellowes are delighted to introduce the unique PowerTrim rotary trimmer, the ultimate user-friendly and safe-to-use trimmer. The operator can clamp the sheets in place, press a control button and let the machine's rotary blade take the strain.

### POWERTRIM A3 ELECTRIC OFFICE TRIMMER

- Provides ultimate convenience for safe and easy trimming anywhere in the office
- Clear acrylic cutting bed is illuminated in use and can easily accept all sheet sizes up to A3
- Large and illuminated control pad for highly visible communication with the operator
- SafeCut™ clamp - the machine cannot be operated until the clamp is closed, locking the sheets safely in position
- Document gauge ensures that maximum sheet capacity cannot be exceeded
- Progressive cutting system cuts through loaded stack with a maximum of 6 passes
- The cut control allows the user to stop a cutting cycle whenever required
- PowerTrim's 30mm rotary blade will cut up to 30 sheets (80gsm) in under 10 seconds



Croxley Sku	Blade Type	Page Format	Cutting Length	Cutting Capacity	Blade Storage	No. of Blades Included
236449	Rotary	A3	420mm	30	No	Fixed Blade

## FELLOWES OFFICE ROTARY TRIMMER

High quality rotary trimmers engineered for safety and precision with unique SafeCut™ features and TUV / GS safety accreditation to ensure excellent results and cutting edge performance.

### FELLOWES ATOM A3 OFFICE ROTARY TRIMMER

- Market-leading cutting capacity
- Durable full metal cutting base with integrated anti-slip feet
- Adjustable back margin for precise cutting
- Variable paper clamp minimises paper movement when cutting
- Secure park position for cutting carriage ensures trimmer is safe when carried
- 2 year machine warranty



Croxley Sku	Blade Type	Page Format	Cutting Length	Cutting Capacity	Blade Storage	No. of Blades Included
236445	Rotary	A3	455mm	30	No	Fixed Blade

## FELLOWES HOME AND HOME OFFICE TRIMMERS

Fellowes rotary trimmers are equipped with SafeCut™ blade cartridges to ensure safe and easy blade exchange. The integrated blade storage system allows a clean and tidy work area, making these trimmers suitable for home office use and ideal for hobby and craft in the home.

### FELLOWES PROTON A4 HOME OFFICE TRIMMER

- Integrated storage for the SafeCut™ blade cartridges
- Full metal cutting base with integrated anti-slip feet
- Adjustable paper clamp minimises paper movement when cutting
- Secure park position for cutting handle ensures safe blade exchange and transportation
- 2 year machine warranty



Croxley Sku	Blade Type	Page Format	Cutting Length	Cutting Capacity	Blade Storage	No. of Blades Included
236444	Rotary	A4	320mm	10	Yes	1

### FELLOWES NEUTRON A4 PLUS HOME TRIMMER

- Integrated storage for the SafeCut™ blade cartridges
- Variable paper clamp minimises paper movement when cutting
- Secure park position for cutting handle ensures safe blade exchange and transportation
- Neutron A4 Plus has an aluminium cutting bed for easy paper alignment and increased durability
- Neutron A4 Plus includes 4 types of SafeCut™ blade cartridges
- 2 year machine warranty



Croxley Sku	Blade Type	Page Format	Cutting Length	Cutting Capacity	Blade Storage	No. of Blades Included
236346	Rotary	A4	320mm	10	Yes	4



# FELLOWES TRIMMER & GUILLOTINE SPECIFICATIONS

## ROTARY TRIMMERS

Rotary Trimmers					Guillotine
	PowerTrim	Atom	Proton	Neutron+	Fusion
Order No.	236449	236445	236444	236346	236443
Manual / Electric	Electric	Manual	Manual	Manual	Manual
Blade Type	Rotary	Rotary	Rotary	Rotary	Guillotine
Cut Type	A3	A3	A4	A4	A3
Cutting Length	420mm	455mm	320mm	320mm	455mm
Cutting Capacity	30 Sheets	30 Sheets	10 Sheets	10 Sheets	10 Sheets
Cuts the following material; film / photos / fabric / board	All Except Board	All	All Except Board	All Except Board	All Except Board
SafeCut™ Blade Cartridge			•	•	
SafeCut™ Blade Guard	•				•
SafeCut™ LED Guide					
SafeCut™ Encapsulated Blade		•			
Interchangeable Heads/Blades	Fixed Blade	Fixed Blade	•	•	Fixed Blade
Blades Included	1	1	1	4	1
SafeCut™ Blade Storage (number)	Fixed Blade	Fixed Blade	3	3	Fixed Blade
Replacable Cutting Strip	•		•	•	Cuts On Table Edge
Adjustable Paper Back-Stop / Edge Guide		•			
Paper Clamp	•	•	•	•	•
Scale Boards Marked in cm & inches	•	•	•	•	•
Full Metal Cutting Base		•	•		•
Carry Handle	•	•	•	•	•
Machine Warranty	2	2	2	2	2
Machine Dimensions / mm (H x W x D)	120 x 300 x 620	668 x 372 x 124	76 x 478 x 218	78 x 476 x 218	418 x 588 x 216
Unit Weight / Kg	5	4.74	1.2	0.86	2.64
Outer Dimensions / mm (H x W x D)	165 x 346 x 686	452 x 188 x 738	250 x 350 x 510	252 x 348 x 510	256 x 204 x 806
Outer Weight / Kg	7	6.46	6.9	5.62	7.12
Quantity per Outer	1	1	4	4	2
CRC	54120	54107	54102	54101	54109
UPC Bar Code	0043859569687	0043859550975	0043859550432	0043859550425	0043859550999
SCS Bar Code	50043859569682	50043859550970	50043859550437	50043859550420	50043859550994

## FELLOWES CLEANING SOLUTIONS

### DUSTING ALONE ISN'T GOOD ENOUGH!

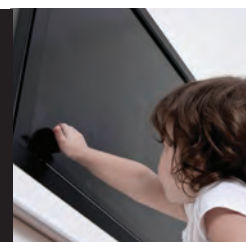
A thorough and regular clean of phones, mice, keyboards, computer screens and desks effectively safeguards against infection whilst at the workstation. Keeping your workstation, keyboard and mouse clean is important and Fellowes offer a wide range of products to help keep your workstation clean and hygienic.

### JUST HOW CLEAN IS YOUR KEYBOARD?

Take the test - place a piece of paper on your desk, tip your keyboard upside down above the paper and give it a shake or a gentle tap. Chances are you have dust particles, food crumbs and other offensive debris trapped. These are just the things you CAN see, imagine what is there that you can't! Keep your workstation and your equipment in peak condition and combat these germs with Fellowes range of cleaning products.

### PROTECTION CLEANING RANGE

Unlike standard surface cleaning wipes, the Virashield range from Fellowes kills 99.9% of germs and bacteria and continues to clean for up to 7 days after the surface has dried, ensuring your working environment stays cleaner and healthier, for longer. Alcohol free, non-toxic, dermatologically safe and an environmentally friendly formula.



## FELLOWES CLEANING SOLUTIONS

### FELLOWES SCREEN CLEANING SPRAY BOTTLE WITH DRY WIPES

- Alcohol-free screen cleaning wipes safely cleans dust, dirt and fingerprints from all types of computer screens and glass surfaces

**236194** Screen Cleaning 12 Pack Twin Wet/Dry Wipes

**236254** Screen Cleaning 100 Wipe Tub



### FELLOWES PRESSURISED DUSTER

- Pressurised Duster designed to rid hard-to-reach areas of dust, dirt and debris
- Includes extension tube to reach into tight areas

**236180** Pressurised Duster



### FELLOWES SURFACE CLEANING WIPE TUB

- Suitable for use on plastic, metal and laminated surfaces including keyboards, printers and desks (not for use on glass surfaces or on screens)

**236190** Surface Cleaning 65 Wipe Mini Tub



### FELLOWES HAND PROTECTION WIPES

- Hand Protection Wipes provide long lasting protection against the build up of bacteria and germs

**232960** Hand Protection Wipes 20 Pack



### FELLOWES CD / DVD LENS CLEANER

- Ensures that the laser reading remains clear and optimised
- Can be used in audio, CD Rom, DVD and recordable drives

**236181** CD / DVD Lens Cleaner



### FELLOWES KEYBOARD CLEANING KIT

- Effective against the build up of germs and bacteria for up to 7 days
- Contains 12 individually wrapped wipes and keyboard cleaning tool
- Protects for up to 7 days

**236235** Keyboard Cleaning Kit



### FELLOWES SURFACE CLEANING WIPES TUB

- 100 pre-moistened multi-surface wipes in a re-useable tub
- Surface cleaning wipes can be used on all workstation surfaces except glass and TFT / LCD screens
- Protects for up to 7 days

**236278** Tub of 100 Cleaning Wipes

**236233** Tub of 75 Cleaning Wipes

